

Super Admin Dashboard – System Overview & Module Documentation

1. Overview

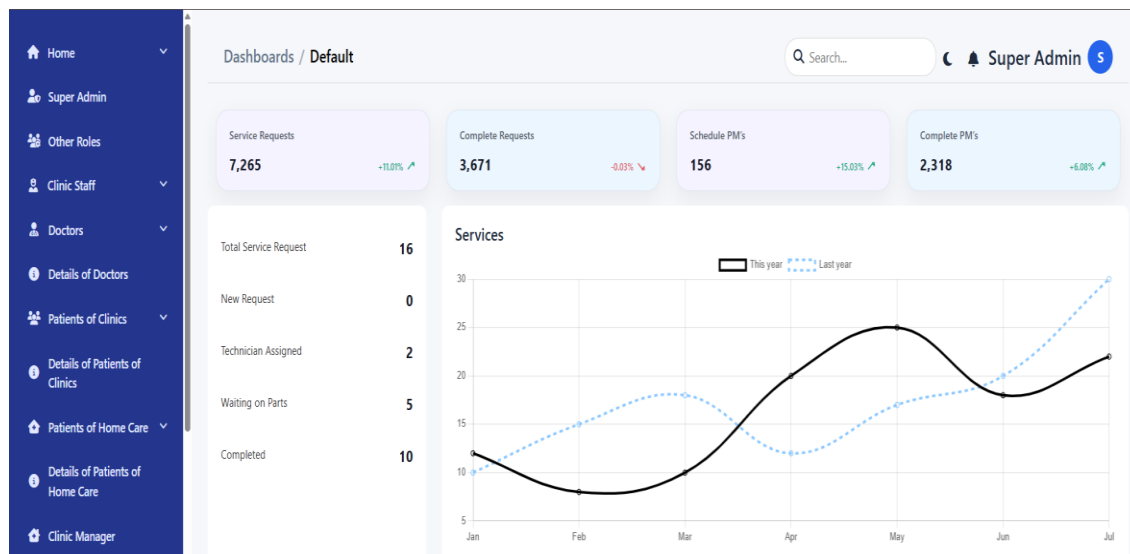
This document provides a complete functional and interface-level explanation of the Super Admin Dashboard. The purpose of this system is to manage healthcare operations across Clinics and Home Care services in a centralized manner. The dashboard is designed to give Super Admin full control over users, medical staff, patients, inventory, billing, attendance, reporting, and communication within the system.

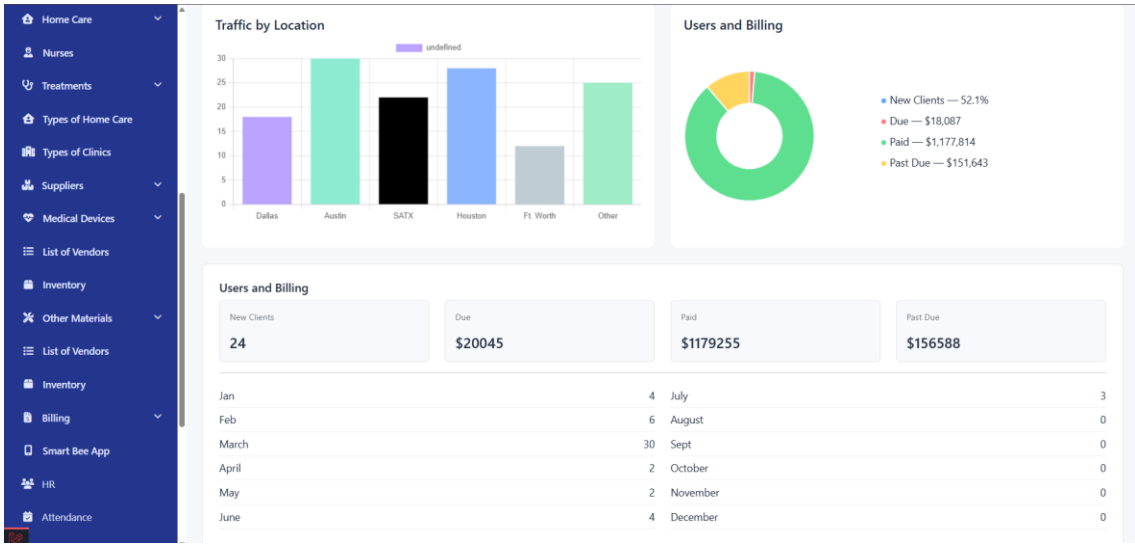
The system supports multiple roles such as Super Admin, Doctors, Nurses, HR staff, Clinic Managers, and other custom roles based on organizational requirements. Each role is granted access according to permissions defined by the Super Admin.

2. Interface Overview

The dashboard interface follows a standard modern layout. On the left side, a vertical sidebar is provided that contains all system menus and sub-menus. The main content area on the right displays dashboards, charts, tables, and records based on the selected menu.

The top bar includes search functionality, notification icons, theme mode options, and the logged-in user profile (Super Admin). The interface is responsive and designed for smooth navigation between modules.





Inventory

Other Materials

List of Vendors

Inventory

Billing

Smart Bee App

HR

Attendance

Hospitals

List of Hospitals in Collaboration

Digital Documentation

Reporting Module

Chat Module

Security

Settings

Users and Billing

New Clients	Due	Paid	Past Due
24	\$20045	\$1179255	\$156588

Jan	4	July	3
Feb	6	August	0
March	30	Sept	0
April	2	October	0
May	2	November	0
June	4	December	0

User	Role	Module	Action	Time
Super Admin Registered: 01 May, 2025	Superadmin	Invoice	Created an Item	42 minutes ago
Super Admin Registered: 01 May, 2025	Superadmin	Inspection	Updated an Item	58 minutes ago
Super Admin Registered: 01 May, 2025	Superadmin	Inspection_Indiv_Charges	Updated an Item	58 minutes ago
Super Admin Registered: 01 May, 2025	Superadmin	Inspection_Batch_Info	Updated an Item	58 minutes ago
Super Admin Registered: 01 May, 2025	Superadmin	Inventories	Updated an Item	1 hour ago

3. Dashboard Analytics & Statistics

The dashboard presents key performance indicators (KPIs) such as total service requests, completed requests, scheduled preventive maintenance (PMs), and completed PMs. These metrics help the Super Admin monitor operational performance at a glance.

Graphical representations such as line charts, bar charts, and donut charts are used to show service trends, billing summaries, traffic by location, and user statistics over time.

4. Sidebar Navigation & Modules

4.1 Home Menu

The Home menu serves as the primary navigation entry point. It contains two sub-menus: Super Admin and Other Roles. The Super Admin section provides full system access, while Other Roles include configurable roles such as Doctors, Nurses, Patients, and HR staff.

4.2 Clinic Staff

The Clinic Staff module manages all clinic-related human resources. It includes Doctors, Patients of Clinics, Patients of Home Care, and Clinic Managers. Each section displays detailed records and performance data.

Doctors

This section lists all registered doctors along with their profiles, service history, clinic services, home care services, ratings, and availability. Clicking on a doctor opens detailed records.

Patients of Clinics

Displays a complete list of clinic-based patients. Each patient record includes medical history, assigned doctors, visit history, and treatment details.

Patients of Home Care

Shows patients receiving home care services. Records include assigned nurses/doctors, visit schedules, and service logs.

Clinic Managers

Clinic Managers oversee clinic operations. This section tracks assigned clinics, staff, and operational performance.

4.3 Home Care

The Home Care module focuses on off-site medical services. It includes nurse management and treatment categorization specific to home-based care services.

Nurses

Lists all nurses providing home care services, including schedules, assigned patients, service history, and ratings.

4.4 Treatments

This module defines and categorizes treatment services offered by the organization.

Types of Home Care Treatments

Includes treatments provided at patient homes such as physiotherapy, injections, wound care, and post-operative support.

Types of Clinic Treatments

Includes treatments performed within clinics such as diagnostics, consultations, and minor procedures.

4.5 Medical Devices

The Medical Devices module manages medical equipment procurement and tracking.

List of Vendors

Contains supplier information, contact details, and associated device supplies.

Inventory

Tracks available medical devices, stock levels, usage history, and maintenance status.

4.6 Other Materials

Manages non-device medical materials such as consumables and accessories.

4.7 Billing

The Billing module handles invoices, payments, dues, and financial summaries. Super Admin can monitor paid, due, and past-due amounts.

4.8 HR & Attendance

This module manages employee attendance records. Users can mark attendance and view attendance history.

4.9 Hospitals

Manages partnered hospitals and clinics. The List of Hospitals in Collaboration displays all associated healthcare facilities.

4.10 Digital Documentation

Stores medical documents such as PDF consent forms and compliance-related files required for medical operations.

4.11 Reporting Module

Provides detailed reports for doctors, nurses, and patients. Reports can be filtered by daily, monthly, yearly, and custom date ranges.

4.12 Chat System

Enables real-time communication between system roles such as Doctors, Nurses, Admin, and HR. This improves coordination and operational efficiency.

4.13 Settings

The Settings module allows configuration of company information including logo, mini logo, loader, address, contact numbers, fax, and email details.

5. System Working & Data Flow

Each module is interactive. When a user clicks on any menu or sub-menu, the system fetches and displays relevant records. For example, clicking on 'Details of Doctors' displays a complete list of doctors with their service statistics.

The system differentiates between Clinic services and Home Care services to ensure accurate service tracking, billing, and reporting.